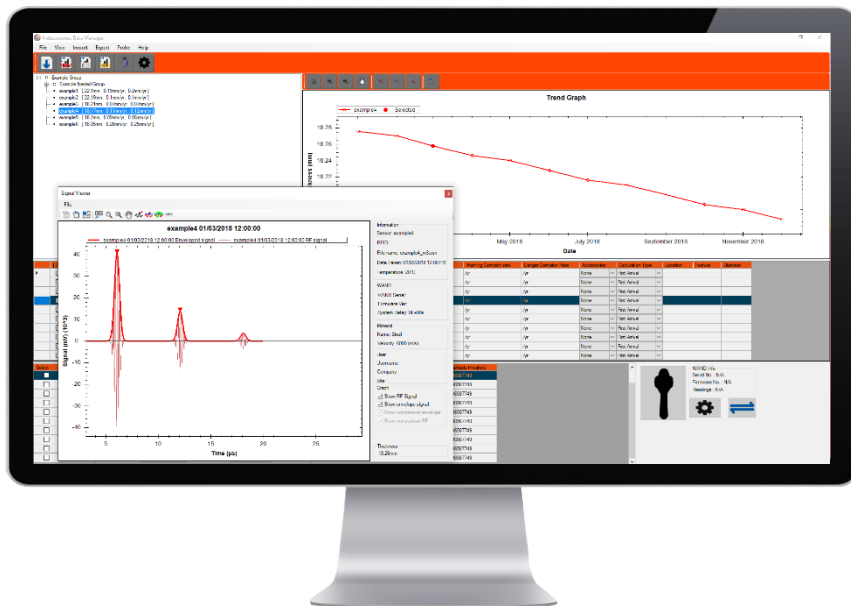


IDM Software

Enables remote data analysis from any assigned TMS sensor. Inductosense Data Manager (IDM) is a windows application that can be used to log, view and analyse data from the Inductosense WAND data collector. The WAND connects to the PC to import the data to the IDM software.



- ① Corrosion/erosion rate trending
- ① Analyse raw ultrasonic signals
- ① Set thickness thresholds to help with detection of structure degradation
- ① Export raw UT measurement files
- ① Easy configuration of the WAND Probe using USB interface
- ① Sensor configuration
- ① Visual representation of thickness changes for individual and multiple sensors
- ① Export Corrosion Reports for use in other tools

Specifications

Product code	IDM
System Requirements	
Operating system	Windows 7 or later (32 or 64 bit)
Processor	Intel Pentium Dual CPU E2140 1.60 GHz or greater
RAM	1.00 GB or greater
Hard disk space	Approx. 250MB
I/O Ports	USB port required (for WAND connection)
Devices	Up to 3 per license



Inductosense Ltd.
Unit 3, Kings Business Park,
Feeder Road, St Philips,
Bristol, BS2 0TZ
United Kingdom

T: +44 (0) 117 403 4047
E: info@inductosense.com
W: www.inductosense.com

Inductosense Ltd is registered in England and Wales with registered number 09689612 and VAT registered number 227006245